

Stock Code:300763.SZ



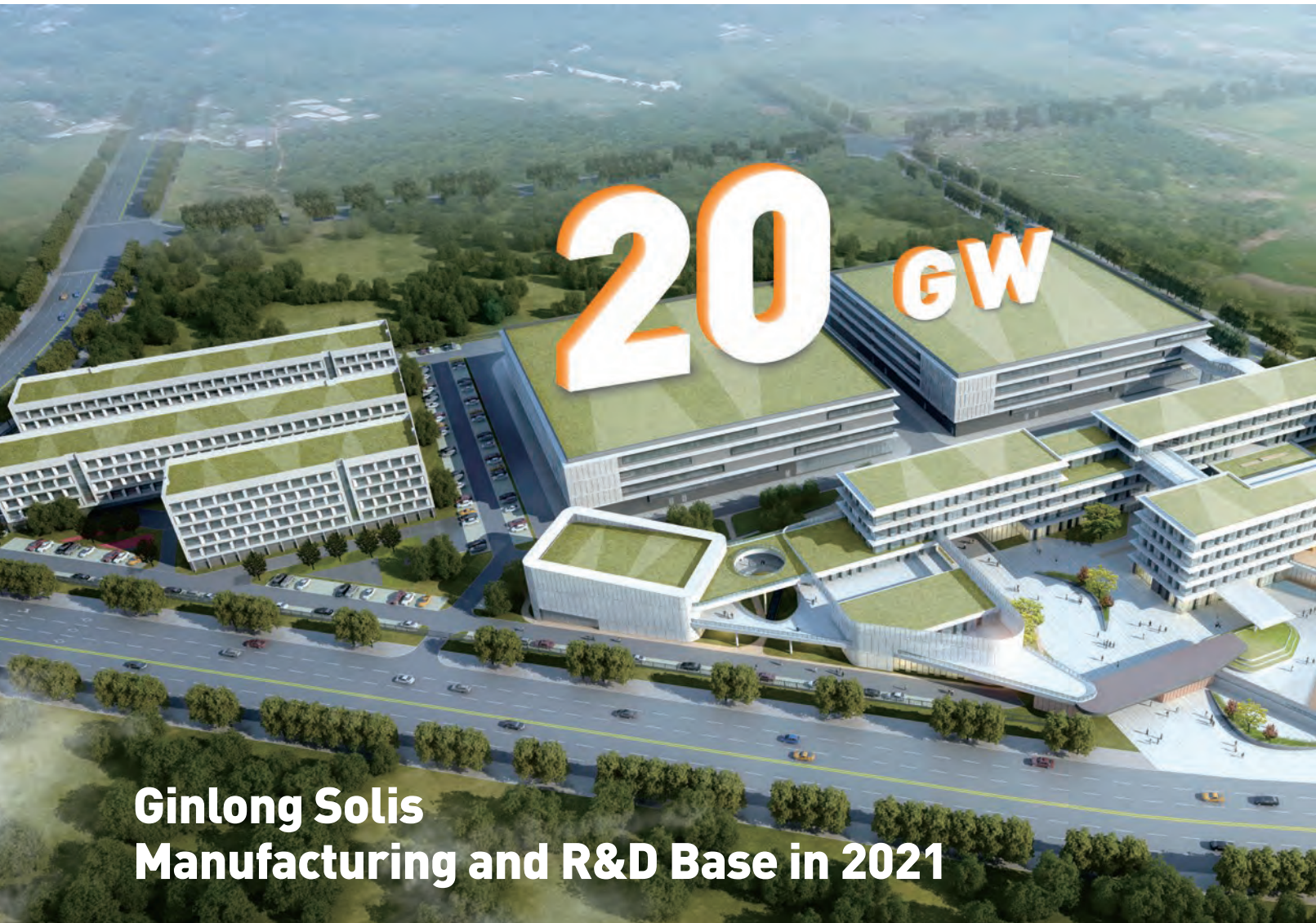
Global string inverter manufacturer



Quality Experience Reliability



Ginlong Technologies Co., Ltd.



Ginlong Solis Manufacturing and R&D Base in 2021

15 years

Since 2005

1500+

Global Employees

200+

Technicians



Top-of-range Lifespan Projection in String Inverter Category
as Validated by DNV·GL.



COMPANY PROFILE

Established in 2005, Ginlong Technologies (Stock Code: 300763.SZ) is one of most experienced and largest manufacturers of solar inverters.

Ginlong's cost-effective solutions for residential, commercial, and utility-scale users deliver value at every level of the solar supply chain, engaging both homeowners and businesses, as well as power producers and renewable energy investors across the globe.

Presented under the Solis brand, the company's solar inverter product line uses innovative string technology to deliver first-class reliability, validated under the most stringent international certifications.

Combining a global supply chain with world-class R&D and manufacturing capabilities, Ginlong optimizes its Solis inverters for each regional market, servicing and supporting its customers with its team of local experts.

Proven bankability has attracted support from world leading financial institutions, ensuring solid long-term returns on investment. Working with stakeholders to accelerate the worlds journey towards a more sustainable future.

99.1%

Efficiency

15 GW+

Global Installation

100+

Countries with Solis Installations

No.3

Solis Ranked Third Among Asian Brands by BloombergNEF's Inverter Bankability.

 solis



Company Milestones

2005	Ginlong Technologies established in Ningbo, China
2006	Second inverter certified to UK G83 certification
2009	First Asian inverter to achieve USA UL1741 certification
2010	Second Asian inverter certified to AS4777/AS 3100
2011	Ginlong hosted IEC61400 second annual meeting
2015	Ginlong inverter installed on the Eiffel Tower in Paris
2015	Achieved top 12 inverter sales ranking in Europe
2016	Listed by Asia PV innovation
2016	Awarded Best Distribution Inverter Brand by PVBL
2016	Certified to ISO 9001:2015 Standard
2016	Certified to ISO 14001:2015 Standard
2015 & 2016	Earned third place ranking in China PV string inverter brand value
2017	Certified to OHSAS 18001:2007 Standard
2017	Three-phase string inverters ranked 4th in global market shares (GTM)
2018	Single-phase string inverters ranked 2nd in global market shares (GTM)
2017 & 2018	Granted prestigious APVIA Technology Achievement Award
2016, 2017 & 2018	Energy storage hybrid inverters ranked 3rd in Chinese market
2015, 2016, 2017, 2018 & 2019	Earned first place ranking in UK distribution PV inverter market
2016, 2017, 2018 & 2019	Awarded Top Brand PV inverters by EuPD Research
2019	Ginlong (Solis) listed as a Public Company
2019	Ginlong (Solis) Ranked Third among Asian Brands by BloombergNEF Bankability
2020	Ginlong Solis won PVBL 2019 Annual Top Global PV Brand Award



Vertically-Integrated Manufacturing



Ginlong's vertically-integrated 5GW+ (20GW+ in 2021) manufacturing allows end-to-end control through every step of production, from component sourcing to final QC. We manage every aspect of manufacturing with state-of-the-art automation, fastidious inspections and rigorous testing, ensuring industry-leading quality. Our in-house SMT circuit board production is unique in the industry, guaranteeing quality and streamlining product innovation in response to customer needs.

Best-in-Class Partners

Capacitors, Inductors



Connectors, Switching Devices



Materials, IC Categories



Power Devices, Sensors



Global Service Network



Service Offices

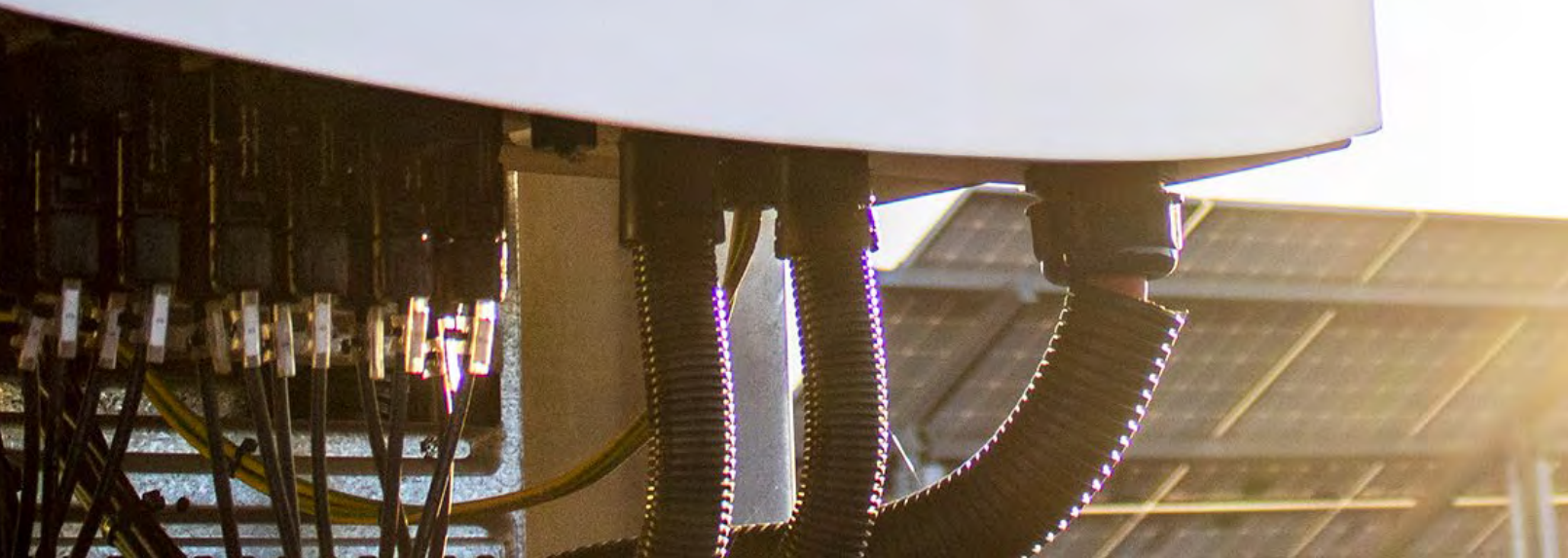
- U.S.A
- Australia
- China
- South Africa
- UK
- Netherlands
- Mexico
- Spain
- India
- Romania
- Brazil

Expert Local Customer Service

- Unmatched experience across a global service network
- Reliable service technicians on the phone and in the field
- Global technical support available



 solis



CONTENTS

Solis Mini Series Inverters	01
Solis Single Phase Inverters	03
Solis Three Phase Inverters	07
Solis Energy Storage Inverters	17
Accessories	23
Case study	29

Solis-mini-(700-3600)-4G

Solis Mini Series Inverters



360 degree

Features:

- ▶ Max. efficiency 97.5%
- ▶ Complies with Western Power, SA, VIC, QLD, and NSW grid requirements
- ▶ Integrate with adjustable Volt-Watt and Volt-Var function
- ▶ DRM integrated, fully comply with AS4777.2:2015
- ▶ Built-in DC-PV2 Switch, comply with AS/NZS 5033 requirements
- ▶ Support 24h consumption monitoring with a smart meter
- ▶ Super high frequency switching technology
- ▶ Precise MPPT algorithm
- ▶ Integrated Export Power Manager (EPM)
- ▶ Compact and lightweight
- ▶ Voltage active power and reactive power



Model:

- | | |
|-----------------------|-----------------------|
| Solis-mini-700-4G | Solis-mini-1000-4G |
| Solis-mini-1500-4G | Solis-mini-2000-4G |
| Solis-mini-2500-4G | Solis-mini-3000-4G |
| Solis-mini-3600-4G | Solis-mini-1500-4G-WP |
| Solis-mini-2000-4G-WP | Solis-mini-2500-4G-WP |

Datasheet

Model Name	Solis-mini-700-4G	Solis-mini-1000-4G	Solis-mini-1500-4G	Solis-mini-2000-4G	Solis-mini-2500-4G	Solis-mini-3000-4G	Solis-mini-3600-4G	Solis-mini-1500-4G-WP	Solis-mini-2000-4G-WP	Solis-mini-2500-4G-WP
------------	-------------------	--------------------	--------------------	--------------------	--------------------	--------------------	--------------------	-----------------------	-----------------------	-----------------------

Input DC

Recommended max. PV power	930 W	1330 W	2000 W	2660 W	3330 W	4000 W	4780 W	2000 W	2660 W	3330 W	
Max. input voltage	600 V										
Rated voltage	200 V			330 V				200 V	330 V		
Start-up voltage	60 V			90 V				60 V	90 V		
MPPT voltage range	50-500 V			80-500 V				50-500 V	80-500 V		
Max. input current	11 A					19 A		11 A			
Max. short circuit current	17.2 A					30 A		17.2 A			
MPPT number/Max. input strings number	1/1					1/2		1/1			

Output AC

Rated output power	700 W	1000 W	1500 W	2000 W	2500 W	3000 W	3600 W	1500 W	2000 W	2500 W
Max. apparent output power	800 VA	1100 VA	1700 VA	2200 VA	2800 VA	3300 VA	3600 VA	1500 VA	2000 VA	2500 VA
Max. output power	800 W	1100 W	1700 W	2200 W	2800 W	3300 W	3600 W	1500 W	2000 W	2500 W
Rated grid voltage	1/N/PE, 230 V									
Rated grid frequency	50 Hz									
Rated grid output current	3.0 A	4.3 A	6.5 A	8.7 A	10.9 A	13 A	16 A	6.5 A	8.7 A	10.9 A
Max. output current	4.4 A	5.2 A	8.1 A	10.5 A	13.3 A	15.7 A	16 A	7.2 A	9.6 A	12.0 A
Power Factor	>0.99 (0.8 leading - 0.8 lagging)									
THDi	<3%									

Efficiency

Max. efficiency	97.2%			97.5%			97.2%		97.5%	
EU efficiency	96.5%			96.8%			96.5%		96.8%	

Protection

DC reverse-polarity protection	Yes									
Short circuit protection	Yes									
Output over current protection	Yes									
Surge protection	Yes									
Grid monitoring	Yes									
Anti-islanding protection	Yes									
Temperature protection	Yes									
Integrated AFCI (DC arc-fault circuit protection)	Yes									
Integrated DC switch	Yes (PV2 Switch)									

General Data

Dimensions (W*H*D)	310*373*160 mm									
Weight	7.4 kg				7.7 kg			7.4 kg		7.7 kg
Topology	Transformerless									
Self consumption (night)	<1 W									
Operating ambient temperature range	-25 ~ +60°C									
Relative humidity	0-100%									
Ingress protection	IP65									
Cooling concept	Natural convection									
Max. operation altitude	4000 m									
Grid connection standard	AS/NZS 4777.2, IEC 62116, IEC 61727, IEC 60068, IEC 61683, EN 50530									
Safety/EMC standard	IEC 62109-1/-2, IEC 61000-6-1/-2/-3/-4									

Features

DC connection	MC4 connector									
AC connection	Quick connection plug									
Display	LCD									
Communication	RS485, Optional: Wi-Fi, GPRS									

Solis-1P(3-6)K-4G

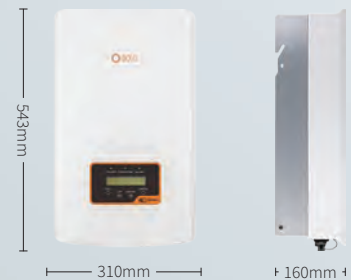
Solis Single Phase Inverters



360 degree

Features:

- ▶ Max. efficiency 98.1%
- ▶ Complies with Western Power, SA, VIC, QLD, and NSW grid requirements
- ▶ Integrate with adjustable Volt-Watt and Volt-Var function
- ▶ DRM integrated, fully comply with AS4777.2:2015
- ▶ Built-in DC-PV2 Switch, comply with AS/NZS 5033 requirements
- ▶ Support 24h consumption monitoring with a smart meter
- ▶ Super high frequency switching technology
- ▶ 2 MPPT design with precise MPPT algorithm
- ▶ Integrated Export Power Manager(EPM)
- ▶ Compact and lightweight
- ▶ Voltage active power and reactive power



Model:

- | | |
|---------------|------------------|
| Solis-1P3K-4G | Solis-1P3.6K-4G |
| Solis-1P4K-4G | Solis-1P4.6K-4G |
| Solis-1P5K-4G | Solis-1P5K-4G-MX |
| Solis-1P6K-4G | |

Datasheet

Model Name	Solis-1P3K-4G	Solis-1P3.6K-4G	Solis-1P4K-4G	Solis-1P4.6K-4G	Solis-1P5K-4G	Solis-1P5K-4G-MX	Solis-1P6K-4G
------------	---------------	-----------------	---------------	-----------------	---------------	------------------	---------------

Input DC

Recommended max. PV power	4000 W	4800 W	5300 W	6100 W	6700 W	6700 W	8000 W
Max. input voltage	600 V						
Rated voltage	330 V						
Start-up voltage	120 V						
MPPT voltage range	90-520 V						
Max. input current	11 A / 11 A						
Max. short circuit current	17.2 A / 17.2 A						
MPPT number/Max. input strings number	2/2						

Output AC

Rated output power	3000 W	3600 W	4000 W	4600 W	5000 W	4999 W	6000 W
Max. apparent output power	3300 VA	4000 VA	4400 VA	5000 VA	5000 VA	4999 VA	6000 VA
Max. output power	3300 W	4000 W	4400 W	5000 W	5000 W	4999 W	6000 W
Rated grid voltage	1/N/PE, 230 V						
Rated grid frequency	50 Hz						
Rated grid output current	13.0 A	15.7 A	17.4 A	20.0 A	21.7 A	21.7 A	27.3 A
Max. output current	15.7 A	16.0 A	21.0 A	21.7 A	21.7 A	21.7 A	27.3 A
Power Factor	>0.99 (0.8 leading - 0.8 lagging)						
THDi	<3%						

Efficiency

Max. efficiency	97.8%	98.1%
EU efficiency	97.1%	97.3%

Protection

DC reverse-polarity protection	Yes
Short circuit protection	Yes
Output over current protection	Yes
Surge protection	Yes
Grid monitoring	Yes
Anti-islanding protection	Yes
Integrated AFCI (DC arc-fault circuit protection)	Yes
Temperature protection	Yes
Integrated DC switch	Yes (PV2 Switch)

General Data

Dimensions (W*H*D)	310*543*160 mm
Weight	11.5 kg
Topology	Transformerless
Self consumption (night)	<1 W
Operating ambient temperature range	-25 ~ +60°C
Relative humidity	0-100%
Ingress protection	IP65
Cooling concept	Natural convection
Max. operation altitude	4000 m
Grid connection standard	AS/NZS 4777.2, IEC 62116, IEC 61727, IEC 60068, IEC 61683, EN 50530
Safety/EMC standard	IEC 62109-1/-2, IEC 61000-6-2/-3

Features

DC connection	MC4 connector
AC connection	Quick connection plug
Display	LCD
Communication	RS485, Optional: Wi-Fi, GPRS

Solis-1P(7-8)K-5G

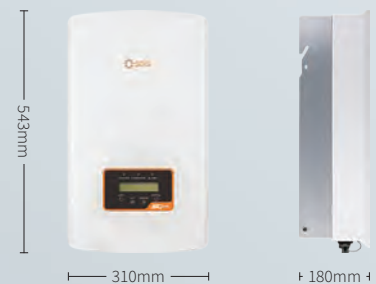
Solis Single Phase Inverters



360 degree

Features:

- ▶ Max. efficiency 98.1%
- ▶ Complies with Western Power, SA, VIC, QLD, and NSW grid requirements
- ▶ Integrate with adjustable Volt-Watt and Volt-Var function
- ▶ DRM integrated, fully comply with AS4777.2:2015
- ▶ Built-in DC-PV2 Switch, comply with AS/NZS 5033 requirements
- ▶ Support 24h consumption monitoring with a smart meter
- ▶ 2 MPPT design with precise MPPT algorithm
- ▶ Wide voltage range and low startup voltage
- ▶ Integrated Export Power Manager(EPM)
- ▶ Voltage active power and reactive power
- ▶ Lightweight, only 13.3kg – easy installation
- ▶ Friendly and adaptable connection to the grid



Model:

Solis-1P7K-5G

Solis-1P8K-5G

Datasheet

Model Name	Solis-1P7K-5G	Solis-1P8K-5G
Input DC		
Recommended max. PV power	9100 W	10400 W
Max. input voltage	600 V	
Rated voltage	330 V	
Start-up voltage	120 V	
MPPT voltage range	90-520 V	
Max. input current	12.5 A / 25 A	
Max. short circuit current	19.5 A / 39 A	
MPPT number/Max. input strings number	2/3	
Output AC		
Rated output power	7000 W	8000 W
Max. apparent output power	7700 VA	8000 VA
Max. output power	7700 W	8000 W
Rated grid voltage	1/N/PE, 230 V	
Rated grid frequency	50 Hz	
Rated grid output current	30.4 A	34.8 A
Max. output current	33.5 A	34.8 A
Power Factor	>0.99 (0.8 leading - 0.8 lagging)	
THDi	<3%	
Efficiency		
Max. efficiency	98.1%	
EU efficiency	97.3%	
Protection		
DC reverse-polarity protection	Yes	
Short circuit protection	Yes	
Output over current protection	Yes	
Surge protection	Yes	
Grid monitoring	Yes	
Anti-islanding protection	Yes	
Temperature protection	Yes	
Integrated AFCI (DC arc-fault circuit protection)	Yes	
Integrated DC switch	Yes (PV2 Switch)	
General Data		
Dimensions (W*H*D)	310*543*180 mm	
Weight	13.3 kg	
Topology	Transformerless	
Self consumption (night)	<1 W	
Operating ambient temperature range	-25 ~ +60°C	
Relative humidity	0-100%	
Ingress protection	IP65	
Cooling concept	Natural convection	
Max. operation altitude	4000 m	
Grid connection standard	AS/NZS 4777.2	
Safety/EMC standard	IEC 62109-1/-2, IEC 61000-6-1/-2/-3/-4	
Features		
DC connection	MC4 connector	
AC connection	Quick connection plug	
Display	LCD	
Communication	RS485, Optional: Wi-Fi, GPRS	

Solis-3P(5-20)K-4G-AU

Solis Three Phase Inverters



360 degree

Features:

- ▶ Max. efficiency 98.7%
- ▶ Complies with Western Power, SA, VIC, QLD, and NSW grid requirements
- ▶ Integrate with adjustable Volt-Watt and Volt-Var function
- ▶ DRM integrated, fully comply with AS4777.2:2015
- ▶ Built-in DC-PV2 Switch, comply with AS/NZS 5033 requirements
- ▶ Support 24h consumption monitoring with a smart meter
- ▶ 2 MPPT design with precise MPPT algorithm
- ▶ THDi<1.5%, low harmonic distortion against grid
- ▶ Integrated Export Power Manager(EPM)
- ▶ Multiple protections functions
- ▶ Voltage active power and reactive power



Model:

Solis-3P5K-4G-AU	Solis-3P5K-4G-AU-MX
Solis-3P6K-4G-AU	Solis-3P8K-4G-AU
Solis-3P9K-4G-AU	Solis-3P10K-4G-AU
Solis-3P12K-4G	Solis-3P15K-4G
Solis-3P17K-4G	Solis-3P20K-4G

Datasheet

Model Name	Solis-3P5K-4G-AU	Solis-3P5K-4G-AU-MX	Solis-3P6K-4G-AU	Solis-3P8K-4G-AU	Solis-3P9K-4G-AU	Solis-3P10K-4G-AU	Solis-3P12K-4G	Solis-3P15K-4G	Solis-3P17K-4G	Solis-3P20K-4G
------------	------------------	---------------------	------------------	------------------	------------------	-------------------	----------------	----------------	----------------	----------------

Input DC

Recommended max. PV power	10 kW	10 kW	12 kW	12 kW	13.5 kW	15 kW	18 kW	22.5 kW	24 kW	24 kW
Max. input voltage	1000 V									
Rated voltage	600 V									
Start-up voltage	180 V									
MPPT voltage range	160-850 V									
Max. input current	22 A / 11 A				22 A / 22 A					
Max. short circuit current	34.3 A / 17.2 A				34.3 A / 34.3 A					
MPPT number/Max. input strings number	2/3				2/4					

Output AC

Rated output power	5 kW	4.999 kW	6 kW	8 kW	9 kW	10 kW	12 kW	15 kW	17 kW	20 kW
Max. apparent output power	5.5 kVA	4.999 kVA	6.6 kVA	8.8 kVA	9.9 kVA	11 kVA	13.2 kVA	16.5 kVA	18.7 kVA	22 kVA
Max. output power	5.5 kW	4.999 kW	6.6 kW	8.8 kW	9.9 kW	11 kW	13.2 kW	16.5 kW	18.7 kW	22 kW
Rated grid voltage	3/N/PE, 230 V / 400 V									
Rated grid frequency	50 Hz									
Rated grid output current	7.2 A	7.2 A	8.7 A	11.5 A	13 A	14.4 A	17.3 A	21.7 A	24.6 A	28.9 A
Max. output current	7.9 A	7.9 A	9.5 A	12.7 A	14.3 A	15.9 A	19.1 A	23.8 A	27 A	31.8 A
Power Factor	>0.99 (0.8 leading - 0.8 lagging)									
THDi	<1.5%									

Efficiency

Max. efficiency	98.3%				98.7%					
EU efficiency	97.8%				98.1%					

Protection

DC reverse-polarity protection	Yes									
Short circuit protection	Yes									
Output over current protection	Yes									
Surge protection	Yes									
Grid monitoring	Yes									
Anti-islanding protection	Yes									
Temperature protection	Yes									
Integrated AFCI (DC arc-fault circuit protection)	Yes									
Integrated DC switch	Yes (PV2 Switch)									

General Data

Dimensions (W*H*D)	310*563*219 mm									
Weight	18.9 kg								19.8 kg	
Topology	Transformerless									
Self consumption (night)	<1 W									
Operating ambient temperature range	-25 ~ +60°C									
Relative humidity	0-100%									
Ingress protection	IP65									
Cooling concept	Intelligent redundant fan-cooling									
Max. operation altitude	4000 m									
Grid connection standard	AS/NZS 4777.2, IEC 62116, IEC 61727, IEC 60068, IEC 61683, EN 50530									
Safety/EMC standard	IEC 62109-1/-2, IEC 61000-6-1/-2/-3/-4									

Features

DC connection	MC4 connector									
AC connection	Quick connection plug									
Display	LCD									
Communication	RS485, Optional: Wi-Fi, GPRS									

Solis-(25-50)K-5G-AU

Solis Three Phase Inverters



360 degree

Features:

- ▶ Max. efficiency 98.8%
- ▶ Complies with Western Power, SA, VIC, QLD, and NSW grid requirements
- ▶ Integrate with adjustable Volt-Watt and Volt-Var function
- ▶ DRM integrated, fully comply with AS4777.2:2015
- ▶ Built-in DC-PV2 Switch, comply with AS/NZS 5033 requirements
- ▶ Support 24h consumption monitoring with a smart meter
- ▶ 4 MPPT design with precise MPPT algorithm, effectively reducing string mismatch
- ▶ 130% DC overload ratio, 13A input for each PV string
- ▶ Strings intelligent monitoring, Smart I-V curve scan
- ▶ Wide voltage range and low startup voltage
- ▶ Fuse free design
- ▶ Type II surge arrester for both DC and AC
- ▶ Natural convection, Fan-less design
- ▶ Voltage active power and reactive power



Model:

- | | | |
|--------------|--------------------|--------------------|
| 400V: | Solis-25K-5G-AU | Solis-30K-5G-AU |
| | Solis-30K-5G-AU-MX | Solis-33K-5G-AU |
| | Solis-36K-5G-AU | Solis-40K-5G-AU |
| 480V: | Solis-40K-HV-5G-AU | Solis-50K-HV-5G-AU |

Datasheet

Model Name	Solis-25K-5G-AU	Solis-30K-5G-AU	Solis-30K-5G-AU-MX	Solis-33K-5G-AU	Solis-36K-5G-AU	Solis-40K-5G-AU	Solis-40K-HV-5G-AU	Solis-50K-HV-5G-AU
Input DC								
Recommended max. PV power	33 kW	39 kW	39 kW	43 kW	47 kW	52 kW	52 kW	65 kW
Max. input voltage	1100 V							
Rated voltage	600 V							
Start-up voltage	180 V							
MPPT voltage range	200-1000 V							
Max. input current	4*26 A							
Max. short circuit current	4*40 A							
MPPT number/Max. input strings number	4/8							
Output AC								
Rated output power	25 kW	30 kW	29.99 kW	33 kW	36 kW	40 kW	40 kW	50 kW
Max. apparent output power	27.5 kVA	33 kVA	29.99 kVA	36.3 kVA	39.6 kVA	44 kVA	44 kVA	55 kVA
Max. output power	27.5 kW	33 kW	29.99 kW	36.3 kW	39.6 kW	44 kW	44 kW	55 kW
Rated grid voltage	3/N/PE, 230 V / 400 V						3/PE, 480 V	
Rated grid frequency	50 Hz							
Rated grid current	36.1 A	43.3 A	43.3 A	47.6 A	52.0 A	57.7 A	48.1 A	60.1 A
Max. output current	41.8 A	50.2 A	43.3 A	55.1 A	60.2 A	66.9 A	53.0 A	66.2 A
Power Factor	>0.99 (0.8 leading - 0.8 lagging)							
THDi	<3%							
Efficiency								
Max. efficiency	98.8%							
CEC efficiency	98.3%							
Protection								
DC reverse-polarity protection	Yes							
Short circuit protection	Yes							
Output over current protection	Yes							
Surge protection	DC Type II / AC Type II							
Grid monitoring	Yes							
Anti-islanding protection	Yes							
Temperature protection	Yes							
Strings monitoring	Yes							
I/V Curve scanning	Yes							
Anti-PID function	Optional							
Integrated AFCI (DC arc-fault circuit protection)	Yes							
Intergarated DC switch	Yes (PV2 Switch)							
General Data								
Dimensions (W*H*D)	647*629*252 mm							
Weight	45 kg							
Topology	Transformerless							
Self consumption (night)	<1 W							
Operating ambient temperature range	-25 ~ +60°C							
Relative humidity	0-100%							
Ingress protection	IP65							
Cooling concept	Natural convection							
Max. operation altitude	4000 m							
Grid connection standard	AS/NZS 4777.2, IEC 62116, IEC 61727, IEC 60068, IEC 61683, EN 50530							
Safety/EMC standard	IEC 62109-1/-2, IEC 61000-6-1/-2/-3/-4							
Features								
DC connection	MC4 connector							
AC connection	OT terminal							
Display	LCD							
Communication	RS485, Optional: Wi-Fi, GPRS							

Solis-(40-60)K

Solis Three Phase Inverters



360 degree

Features:

- ▶ Max. efficiency 98.8%
- ▶ Complies with Western Power, SA, VIC, QLD, and NSW grid requirements
- ▶ Integrate with adjustable Volt-Watt and Volt-Var function
- ▶ DRM integrated, fully comply with AS4777.2:2015
- ▶ High precision, high speed MPPT algorithm
- ▶ THDi<3%, low harmonic distortion against grid
- ▶ Anti-resonance, single transformer can connect 6M+ in parallel
- ▶ Perfect commercial site monitoring solution
- ▶ Compact and light weight design for easy installation
- ▶ IP65, visually pleasing for domestic environment
- ▶ Intelligent redundant fan-cooling
- ▶ Voltage active power and reactive power



Model:

- | | |
|---------------------------|--------------|
| 400V: Solis-40K | Solis-50K |
| 480V: Solis-50K-HV | Solis-60K-HV |

Datasheet

Model Name	Solis-40K	Solis-50K	Solis-50K-HV	Solis-60K-HV
Input DC				
Recommended max. PV power	53 kW	67 kW	67 kW	80 kW
Max. input voltage	1100 V			
Rated voltage	600 V		720 V	
Start-up voltage	200 V			
MPPT voltage range	200-1000 V			
Max. input current	4*22 A	4*28.5 A	4*22 A	4*28.5 A
Max. short circuit current	4*34.3 A	4*44.5 A	4*34.3 A	4*44.5 A
MPPT number/Max. input strings number	4/8	4/12	4/8	4/12
Output AC				
Rated output power	40 kW	50 kW	50 kW	60 kW
Max. apparent output power	44 kVA	55 kVA	55 kVA	66 kVA
Max. output power	44 kW	55 kW	55 kW	66 kW
Rated grid voltage	3/N/PE, 220 V / 380 V, 230 V / 400 V		3/PE, 480 V	
Rated grid frequency	50 Hz			
Rated grid output current	58 A	72.2 A	60.2 A	72.2 A
Max. output current	66.9 A	83.3 A	66.2 A	80 A
Power Factor	>0.99 (0.8 leading - 0.8 lagging)			
THDi	<3%			
Efficiency				
Max. efficiency	98.8%			
EU efficiency	98.4%			
Protection				
DC reverse-polarity protection	Yes			
Short circuit protection	Yes			
Output over current protection	Yes			
Surge protection	Yes			
Grid monitoring	Yes			
Anti-islanding protection	Yes			
Temperature protection	Yes			
Strings monitoring	Yes			
Anti-PID function	Optional			
Integrated AFCI (DC arc-fault circuit protection)	Optional			
Integrated DC switch	Optional			
General Data				
Dimensions (W*H*D)	630*700*357 mm			
Weight	61 kg	63 kg	61 kg	63 kg
Topology	Transformerless			
Self consumption (night)	<1 W			
Operating ambient temperature range	-25 ~ +60°C			
Relative humidity	0-100%			
Ingress protection	IP65			
Cooling concept	Natural convection	Intelligent redundant fan-cooling	Natural convection	Intelligent redundant fan-cooling
Max. operation altitude	4000 m			
Grid connection standard	AS/NZS 4777.2, IEC 62116, IEC 61727, IEC 60068, IEC 61683, EN 50530			
Safety/EMC standard	IEC 62109-1/-2, IEC 61000-6-2/-4			
Features				
DC connection	MC4 connector			
AC connection	OT terminal			
Display	LCD			
Communication	RS485, Optional: Wi-Fi, GPRS			

Solis-(100-125)K-5G

Solis Three Phase Inverters



Model:

400V: Solis-100K-5G **480V:** Solis-125K-HV-5G
Solis-110K-5G



360 degree



Efficient

- ▶ 10 MPPTs, max. efficiency 99%
- ▶ > 150% DC/AC ratio
- ▶ High power tracking density 90MPPT/MW
- ▶ Compatible with bifacial modules



Safe

- ▶ AFCI protection, proactively reduces fire risk
- ▶ Built-in PID recovery for better module performance (optional)
- ▶ Type I SPD for AC (optional)
- ▶ Overvoltage load reduction and leakage current suppression technology, low failure rate
- ▶ Globally recognised branded componentry for longer life



Smart

- ▶ Night SVG function
- ▶ Intelligent string monitoring. Smart I-V curve diagnosis
- ▶ Remote firmware upgrade with simple operation



Economic

- ▶ Power line communication (PLC)
- ▶ Support "Y" type connection in DC side
- ▶ Supports aluminium wire access to reduce cost

Datasheet

Model Name	Solis-100K-5G	Solis-110K-5G	Solis-125K-HV-5G
Input DC			
Max. input voltage	1100 V		
Rated voltage	600 V		720 V
Start-up voltage	195 V		
MPPT voltage range	180-1000 V		
Max. input current	10*26 A		
Max. short circuit current	10*40 A		
MPPT number/Max. input strings number	10/20		
Output AC			
Rated output power	100 kW	110 kW	12.5 kW
Max. apparent output power	110 kVA	121 kVA	137.5 kVA
Max. output power	110 kW	121 kW	137.5 kW
Rated grid voltage	3/N/PE, 220 V / 380 V, 230 V / 400V		3/PE, 480 V
Rated grid frequency	50 Hz / 60 Hz		
Rated grid output current	152.0 A / 144.3 A	167.1 A / 158.8 A	150.4 A
Max. output current	167.1 A	183.8 A	165.4 A
Power Factor	>0.99 (0.8 leading - 0.8 lagging)		
THDi	<3%		
Efficiency			
Max. efficiency	98.7%		99.0%
EU efficiency	98.3%		98.5%
Protection			
DC reverse-polarity protection	Yes		
Short circuit protection	Yes		
Output over current protection	Yes		
Surge protection	DC Type II / AC Type II (AC Type I optional)		
Grid monitoring	Yes		
Anti-islanding protection	Yes		
Strings monitoring	Yes		
I/V Curve scanning	Yes		
Anti-PID function	Optional		
Integrated AFCI (DC arc-fault circuit protection)	Yes		
Integrated DC switch	Yes		
Integrated AC switch	Optional		
General Data			
Dimensions (W*H*D)	1065*567*344.5 mm		
Weight	84 kg		
Topology	Transformerless		
Self consumption (night)	<2 W		
Operating ambient temperature range	-25 ~ +60°C		
Relative humidity	0-100%		
Ingress protection	IP66		
Cooling concept	Intelligent redundant fan-cooling		
Max. operation altitude	4000 m		
Grid connection standard	AS/NZS 4777.2, IEC 62116, IEC 61727, IEC 60068, IEC 61683, EN 50530		
Safety/EMC standard	EC 62109-1/-2, IEC 61000-6-2/-4		
Features			
DC connection	MC4 connector		
AC connection	OT terminal (max. 185 mm ²)		
Display	LCD		
Communication	RS485, Optional: Wi-Fi, GPRS, PLC		

Solis-(208-255)K-EHV

Solis Three Phase Inverters



Model:

800V: Solis-208K-EHV Solis-255K-EHV Solis-255K-EHV-5G



360 degree



Efficient

- ▶ 9/12/14 MPPTs, max. efficiency 99%
- ▶ 200% DC/AC ratio
- ▶ High power tracking density 60MPPT/MW
- ▶ Compatible with bifacial modules



Safe

- ▶ IP66
- ▶ Built-in PID recovery for better module performance
- ▶ Fuse free design, safe and maintenance free
- ▶ Globally recognised branded component for longer life



Smart

- ▶ Night SVG function
- ▶ Intelligent string monitoring. Smart I-V curve scan
- ▶ Remote firmware upgrade with simple operation



Economic

- ▶ Power line communication (PLC) (optional)
- ▶ DC side supports two sinks and one access
- ▶ Supports aluminium wire access to reduce cost
- ▶ Reserve DC energy storage access

Datasheet

Model Name	Solis-208K-EHV	Solis-255K-EHV	Solis-255K-EHV-5G
Input DC			
Max. input voltage	1500 V		
Rated voltage	1080 V		
Start-up voltage	600 V		
MPPT voltage range	580-1500 V		
Max. input current	9*30 A	12*30 A	14*26 A
Max. short circuit current	9*50 A	12*50 A	14*40 A
MPPT number/Max. input strings number	9/18	12/24	14/28
Output AC			
Rated output power	208 kVA @ 30°C / 200 kVA @ 40°C / 192 kVA @ 50°C	255 kVA @ 30°C / 235 kVA @ 40°C / 220 kVA @ 50°C	255 kVA @ 30°C / 235 kVA @ 40°C / 220 kVA @ 50°C
Rated grid voltage	3/PE, 800 V		
Grid voltage range	640-920 V		
Rated grid frequency	50 Hz / 60 Hz		
Max. output current	150.1 A	184.0 A	184.0 A
Power Factor	>0.99 (0.8 leading - 0.8 lagging)		
THDi	<3%		
Efficiency			
Max. efficiency	99.0%		
EU efficiency	98.8%		98.7%
Protection			
DC reverse-polarity protection	Yes		
Short circuit protection	Yes		
Output over current protection	Yes		
Surge protection	DC Type II / AC Type II		
Grid monitoring	Yes		
Anti-islanding protection	Yes		
Temperature protection	Yes		
Strings monitoring	Yes		
I/V Curve scanning	Yes		
Night time SVG function	Yes		
Anti-PID function	Yes		
Integrated DC switch	Yes		
General Data			
Dimensions (W*H*D)	1125*770*384 mm		
Weight	113 kg		
Topology	Transformerless		
Self consumption (night)	<2 W		
Operating ambient temperature range	-25 ~ +60°C		
Relative humidity	0-100%		
Ingress protection	IP66		
Cooling concept	Intelligent redundant fan-cooling		
Max. operation altitude	4000 m		
Grid connection standard	EN50549, G99, AS4777.2, VDE0126, IEC61727, VDE4110, CEA 2019		
Safety/EMC standard	IEC/EN 62109-1/-2, IEC/EN 61000-6-2/-4		
Features			
DC connection	MC4 connector		
AC connection	OT terminal (max. 300 mm ²)		
Display	LCD		
Communication	RS485, Optional: PLC		

RAI-3K-48ES-5G

Solis Energy Storage Inverters



360 degree

Features:

- ▶ Complies with Western Power, SA, VIC, QLD, and NSW grid requirements
- ▶ Integrate with adjustable Volt-Watt and Volt-Var function
- ▶ Uninterrupted power supply, 10ms reaction
- ▶ Compatible with both lead-acid battery and li-ion battery
- ▶ DRM integrated, fully comply with AS4777.2:2015
- ▶ Compatible with any existing grid-tied PV system, option to upgrade
- ▶ Off-grid backup function
- ▶ EPS function
- ▶ Intelligent EMS function
- ▶ Intelligent debugging APP which support one-click inverter configuration
- ▶ CAN, RS485 (Optional)
- ▶ Various work mode for different application scenario
- ▶ Natural cooling without external fan



Model:

RAI-3K-48ES-5G

Datasheet

Model Name	RAI-3K-48ES-5G
Output AC (Grid side)	
Rated output power	3000 W
Max. apparent output power	3.6 kVA, 30 s; 4.5 kVA, 10 s
Operation phase	1/N/PE
Rated grid voltage	220 V / 230 V
Grid voltage range	184-264 V
Rated grid frequency	50 Hz / 60 Hz
Rated grid output current	13.6 A / 13 A
Max. output current	20 A
Power Factor	>0.99 (0.8 leading - 0.8 lagging)
THDi	<3%
Battery	
Battery type	Li-ion / Lead-acid
Battery voltage range	40-60 V
Battery capacity	50-2000 Ah
Max. charge / discharge power	3 kW
Max. charge / discharge current	60 A
Communication	CAN
Output AC (Back-up)	
Rated output power	3kW (Requires battery voltage higher than 55 V)
Max. apparent output power	4.5 kVA
Back-up switch time	<10 ms
Rated output voltage	1/N/PE, 220 V / 230 V
Rated frequency	50 Hz / 60 Hz
Rated output current	13.6 A / 13 A
THDv (@linear load)	<3%
Input AC (Grid side)	
Input voltage range	184-264 V
Max. input current	32 A
Frequency range	45-55 Hz / 55-65 Hz
Efficiency	
Max. battery charge efficiency	94.0%
Max. battery discharge efficiency	94.5%
Protection	
Battery reverse protection	Yes
Battery over and under voltage protection	Yes
Short circuit protection	Yes
Output over current protection	Yes
Temperature protection	Yes
General Data	
Dimensions (W*H*D)	403*525*170 mm
Weight	15 kg
Topology	High frequency isolation
Operating ambient temperature range	-25 ~ +60°C
Ingress protection	IP65
Cooling concept	Natural convection
Max. operation altitude	2000 m
Grid connection standard	AS/NZS 4777.2, IEC 62116, IEC 61727, IEC 60068, IEC 61683
Safety/EMC standard	AS 62040.1, EN 61000-6-2/-3
Features	
DC connection	Screw terminal
AC connection	Screw clamp terminal (max. 6 mm ²)
Display	LCD
Communication	RS485, CAN, Optional: Wi-Fi, GPRS

RHI-(3-6)K-48ES-5G

Solis Energy Storage Inverters



360 degree

Features:

- ▶ Uninterrupted power supply, 20ms reaction
- ▶ Complies with Western Power, SA, VIC, QLD, and NSW grid requirements
- ▶ 5kW backup power to support more important loads
- ▶ With shifting and peak shaving capabilities friendly to grid
- ▶ DRM integrated, fully comply with AS4777.2:2015
- ▶ Multiple working modes to make maximize self-consumption, increase benefit
- ▶ Higher charge-discharge efficiency, improving the economic benefits
- ▶ Fanless design, long lifespan
- ▶ Intelligent BMS function, improving battery's reliability
- ▶ With high-frequency isolation technology, making system safer and long lifespan
- ▶ 24-hour fully intelligent energy management, Real-time grasp of PV plant status
- ▶ Remotely control & upgrade function, making digital power plant maintenance at your fingertips



Model:

- | | |
|------------------|------------------|
| RHI-3K-48ES-5G | RHI-3.6K-48ES-5G |
| RHI-4.6K-48ES-5G | RHI-5K-48ES-5G |
| RHI-6K-48ES-5G | |

Datasheet

Model Name	RHI-3K-48ES-5G	RHI-3.6K-48ES-5G	RHI-4.6K-48ES-5G	RHI-5K-48ES-5G	RHI-6K-48ES-5G
Input DC (PV side)					
Recommended max. PV power	7 kW	7 kW	8 kW	8 kW	8 kW
Max. input voltage			600 V		
Rated voltage			330 V		
Start-up voltage			120 V		
MPPT voltage range			90-520 V		
Max. input current			11 A / 11 A		
Max. short circuit current			17.2 A / 17.2 A		
MPPT number/Max. input strings number			2/2		
Battery					
Battery type			Li-ion / Lead-acid		
Battery voltage range			42 - 58 V		
Battery capacity			50 - 2000 Ah		
Max. charge / discharge power	3 kW		5 kW		
Max. charge / discharge current	62.5 A		100 A		
Communication			CAN/RS485		
Output AC (Back-up)					
Rated output power	3 kW		5 kW		
Max. apparent output power	4 kVA		6 kVA		
Back-up switch time			<20 ms		
Rated output voltage			1/N/PE, 220 V / 230 V		
Rated frequency			50 Hz / 60 Hz		
Rated output current	13.6 A / 13 A		22.7 A / 21.7 A		
THDv (linear load)			2%		
Input AC (Grid side)					
Input voltage range			184-264 V		
Max. input current			26.1 A		
Frequency range			45-55 Hz / 55-65 Hz		
Output AC (Grid side)					
Rated output power	3 kW	3.6 kW	4.6 kW	5 kW	6 kW
Max. apparent output power	3.3 kVA	4 kVA	4.6 kVA	5.5 kVA	6 kVA
Operation phase			1/N/PE		
Rated grid voltage			220 V / 230 V		
Rated grid frequency			50 Hz / 60 Hz		
Rated grid output current	13.6 A / 13 A	16.3 A / 15.7 A	20.9 A / 20 A	22.7 A / 21.7 A	27.2 A / 26.1 A
Max. output current	15.7 A	17.3 A	23 A	23.9 A	26.1 A
Power Factor			>0.99 (0.8 leading - 0.8 lagging)		
THDi			<2%		
Efficiency					
Max. efficiency			>97.5%		
EU efficiency			>96.8%		
Protection					
Ground fault monitoring			Yes		
Integrated AFCI (DC arc-fault circuit protection)			Optional		
DC reverse-polarity protection			Yes		
Protection class/Over voltage category			I/II		
General Data					
Dimensions (W*H*D)			333*505*249 mm		
Weight			17 kg		
Topology			High frequency isolation (for battery)		
Operating ambient temperature range			-25 ~ +60°C		
Ingress protection			IP65		
Cooling concept			Natural convection		
Max. operation altitude			2000 m		
Grid connection standard			EN50438, G98, G99, AS4777.2:2015, VDE0126-1-1, IEC 61727, VDE N4105, CEI 0-21, CE		
Safety/EMC standard			IEC62040-1, IEC62109-1/-2, AS3100, NB/T 32004, EN61000-6-2, EN61000-6-3		
Features					
DC connection			MC4 connector		
AC connection			Quick connection plug		
Display			7.0"LCD color screen display		
Communication			RS485, Optional: Wi-Fi, GPRS		

RHI-3P(5-10)K-HVES-5G

Solis Energy Storage Inverters



360 degree

Features:

- ▶ Max. efficiency is 98.4%
- ▶ 2 MPPT and 4 DC input; Max 26A DC input current
- ▶ three operating modes (self-consumption; time-of-use; off-grid back-up) & programmable energy management
- ▶ Power supply can be switched automatically and switching time within 40ms
- ▶ Ensures AC backup for up to 10kW of continuous power and 16kVA of peak power
- ▶ Time of use shifting and peak shaving capabilities to grid
- ▶ Solis supply optional arc fault circuit interrupter (AFCI) function
- ▶ Intelligent EMS function
- ▶ Support three-phase imbalance
- ▶ 24-hour fully intelligent energy management, Real-time grasp of PV plant status
- ▶ Remotely control & upgrade function, making digital power plant maintenance at your fingertips



Model:

- | | |
|------------------|-------------------|
| RHI-3P5K-HVES-5G | RHI-3P6K-HVES-5G |
| RHI-3P8K-HVES-5G | RHI-3P10K-HVES-5G |

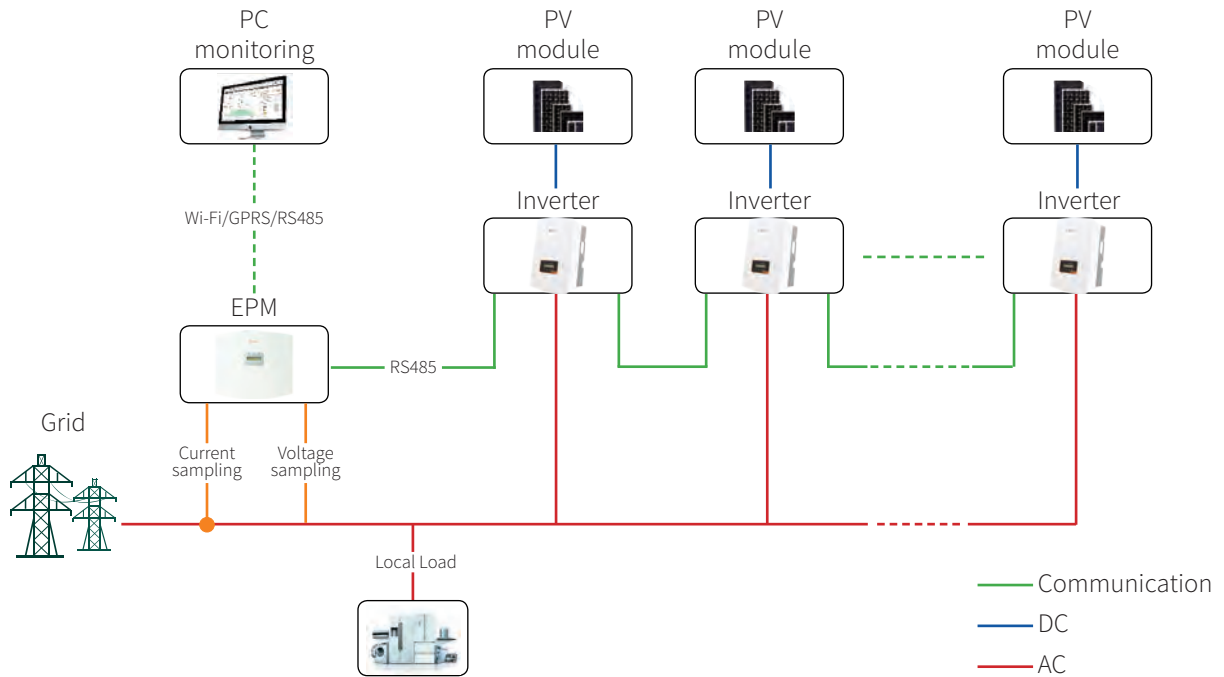
Datasheet

Model Name	RHI-3P5K-HVES-5G	RHI-3P6K-HVES-5G	RHI-3P8K-HVES-5G	RHI-3P10K-HVES-5G
Input DC (PV side)				
Recommended max. PV power	8 kW	9.6 kW	12.8 kW	16 kW
Max. input voltage	1000 V			
Rated voltage	600 V			
Start-up voltage	160 V			
MPPT voltage range	200-850 V			
Max. input current	13 A / 13 A		26 A / 13 A	26 A / 26 A
Max. short circuit current	19.5 A / 19.5 A		39 A / 19.5 A	39 A / 39 A
MPPT number/Max. input strings number	2/2		2/3	2/4
Battery				
Battery type	Li-ion			
Battery voltage range	160-600 V			
Max. charge / discharge power	5 kW	6 kW	8 kW	10 kW
Max. charge / discharge current	25 A			
Communication	CAN/RS485			
Output AC (Grid side)				
Rated output power	5 kW	6 kW	8 kW	10 kW
Max. apparent output power	5 kVA	6 kVA	8 kVA	10 kVA
Operation phase	3/N/PE			
Rated grid voltage	380 V / 400 V			
Rated grid frequency	50 Hz / 60 Hz			
Rated grid output current	7.6 A / 7.2 A	9.1 A / 8.7 A	12.2 A / 11.5 A	15.2 A / 14.4 A
Max. output current	8.4 A	10 A	13.4 A	16.7 A
Power Factor	>0.99 (0.8 leading - 0.8 lagging)			
THDi	<2%			
Output AC (Back-up)				
Rated output power	5 kW	6 kW	8 kW	10 kW
Max. apparent output power	5 kVA	6 kVA	8 kVA	10 kVA
Peak apparent output power	10 kVA, 60 sec	12 kVA, 60 sec	16 kVA, 60 sec	16 kVA, 60 sec
Back-up switch time	< 40 ms			
Rated output voltage	3/N/PE, 380 V / 400 V			
Rated frequency	50 Hz / 60 Hz			
Rated output current	7.6 A / 7.2 A	9.1 A / 8.7 A	12.2 A / 11.5 A	15.2 A / 14.4 A
Max. output current	8.4 A	10 A	13.4 A	16.7 A
THDv (linear load)	<2%			
Efficiency				
Max. efficiency	98.4%			
EU efficiency	97.7%			
MPPT efficiency	99.9%			
Battery charge/discharge efficiency	97.5%			
Protection				
Anti-islanding protection	Yes			
Output over current protection	Yes			
Output short protection	Yes			
DC switch	Yes			
DC reverse-polarity protection	Yes			
PV over voltage protection	Yes			
Battery reverse protection	Yes			
General Data				
Dimensions (W*H*D)	535*455*181 mm			
Weight	25.1 kg			
Topology	Transformerless			
Self consumption (night)	<7 W			
Operating ambient temperature range	-25 ~ +60°C			
Relative humidity	0-100%			
Ingress protection	IP65			
Cooling concept	Natural convection			
Max. operation altitude	4000 m			
Grid connection standard	VDE-AR-N 4105, VDE V 0124, VDE V 0126-1-1, UTE C15-712-1, NRS 097-1-2, G98, G99, EN 50549-1, RD 1699, UNE 206006, UNE 206007-1, CEI 0-21			
Safety/EMC standard	IEC 62109-1/-2, EN 61000-6-2/-3			
Features				
DC connection	MC4 connector			
AC connection	Quick connection plug			
Display	LCD			
Communication	RS485, Optional: Wi-Fi, GPRS			

Accessories

Solis Export Power Manager

Solis Export Power Manager



Smart & strong

- Simultaneous control of 80 X Solis inverters
- Realizing reactive compensation of the system, which ensure the power factor of the system is up to standard

Saving & high precision

- Simultaneously monitor the operating data of the 80 X Solis inverter, saving the cost of the monitoring system
- The control accuracy is up to 3%, which improves the system's spontaneous use rate

Friendly & compatible

- Supports simultaneous access of Solis inverters with different powers
- Monitor power generation and load consumption at all times



Datasheet

Model Name	Solis-EPM1-5G	Solis-EPM3-5G	Solis-EPM3-5G-PLUS
------------	---------------	---------------	--------------------

Input AC

Rated voltage	230 V, 1/N/PE	400 V, 3/N/PE or 3/PE	400 V, 3/N/PE
Input voltage range	L to N: 100~277 V		L to L: 320~480 V
Input frequency range	45~65 Hz		
Input current	5 A		

Communication

Inverter communication	Modbus RS485		
Maximum communication inverter numbers	10	10	80 ⁽¹⁾
Maximum communication distance	1000 m		
Monitoring	Wi-Fi stick or GPRS stick for single inverter connection Wi-Fi box or GPRS box for 2~10 inverters connection		Wi-Fi box (Built in)

General Data

Ambient temperature	-25 ~ +60°C		
Relative humidity	5%~95%		
Ingress protection	IP65		
Self consumption	<5 W	<15 W	
Dimensions (W*H*D)	364*276*114 mm	488*446*149 mm	
Weight	2.1 kg	5.4 kg	
AC connection	Quick connection terminal		
CT connection	Plug terminal		
Display	LCD		

Features

Failsafe function	Yes		
Remote upgraded	Yes ⁽²⁾	Yes	
CT specification	Optional		
Control time	5 s		
Power Accuracy	3%		

CT specification

Specification	Dimensions (mm)			Hole size (mm)		Ratio
	W	H	D	a	e	
CT-30×20-100A	90	114	40	22	32	100:5A
CT-60×40-300A	114	140	36	42	62	300:5A
CT-80×40-600A	122	162	40	42	82	600:5A
CT-80×40-1000A	122	162	40	42	82	1000:5A
CT-160×80-2000A	184	254	52	82	162	2000:5A
CT-160×80-3000A	184	254	52	82	162	3000:5A

Note:

(1) The installation capacity of the inverter connected to the grid does not exceed 2MW.

(2) When multiple inverters are connected, a dedicated Wifi-box is required to upgrade the EPM firmware remotely.

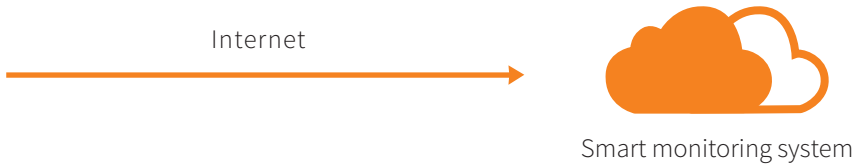
Accessories

Solis Data Logging Stick

Ginlong Monitoring System



Data Logging Stick



Data Logging Stick: Wi-Fi

- Quick installation and easy operation enabling local and remote monitoring
- Mobile APP installation for Android and IOS
- Flexible outdoor rated Wi-Fi connection

Data Logging Stick: LAN

- Quick installation and easy operation
- Plug and play functionality
- Stable and reliable LAN connection

Data Logging Stick: GPRS

- Quick installation and easy operation
- Connecting inverters with 'plug and play' function
- Easy visualization of data and other information via mobile device
- GPRS communication enabling mobile monitoring anytime anywhere

Datasheet

Model Name	DLS-W(Wi-Fi)	DLS-L(LAN)	DLS-G(GPRS)
Max. number of inverters	1		
Inverter communication	4pin		
Remote communication	Wi-Fi (802.11 b/g/n)	Ethernet 10/100Mbps	GPRS Class 12
Communication rate	9600 bps (adjustable:1200-57600 bps)		
Frequency	2.412 GHz-2.484 GHz	/	850/900/1800/1900 MHz
Wi-Fi communication range	100m in outdoor open area without obstruction	/	/
LAN communication range	/	50m (CAT-5e Shielded Twisted Pair)	/
Wi-Fi transmitting power	802.11b: +20dBm (Max) 802.11g: +18dBm (Max) 802.11n: +15dBm (Max) Configurable by users	/	/
Wi-Fi receiving sensitivity	802.11b: -89dBm 802.11g: -81dBm 802.11n: -71dBm	/	/
GPRS Mobile Station	/	/	ClassC
Compatible with the GSM Phase 2/2 +	/	/	Class 4 (2W@850/900MHz) Class 1 (1W@1800/1900MHz)
External antenna	I-PEX antenna	/	I-PEX antenna
Data collection intervals	5 minutes (adjustable: 1-20 minutes)		
Data interface	RS485		
Preferences setting	Web Server		
Firmware updates	Wireless	Ethernet	Wireless
Data access	Wi-Fi point-to-point/Remote server	Remote server	
Data storage	8MBYTE FLASH		

Electrical

Input voltage	DC 5V	DC 5V (+/-5%)	DC 5V (+/-5%)
Working current	200-300 mA	110-200 mA	160-500 mA
Static power consumption	/	/	<2W
Max. instantaneous power consumption	/	/	<8W

Environmental

Operating temperature	-10 ~ +85°C	-10 ~ +85°C	-10 ~ +85°C
Operating humidity	10%-90% Relative humidity, no condensa		
Storage temperature	-40 ~ +125°C	-40 ~ +125°C	-40 ~ +125°C
Storage humidity	<40%		
Protection class	IP65		

General Data

Dimensions (L*W*H)	118*43*43 mm	105*43*43 mm	118*43*43 mm
Weight	56 g		

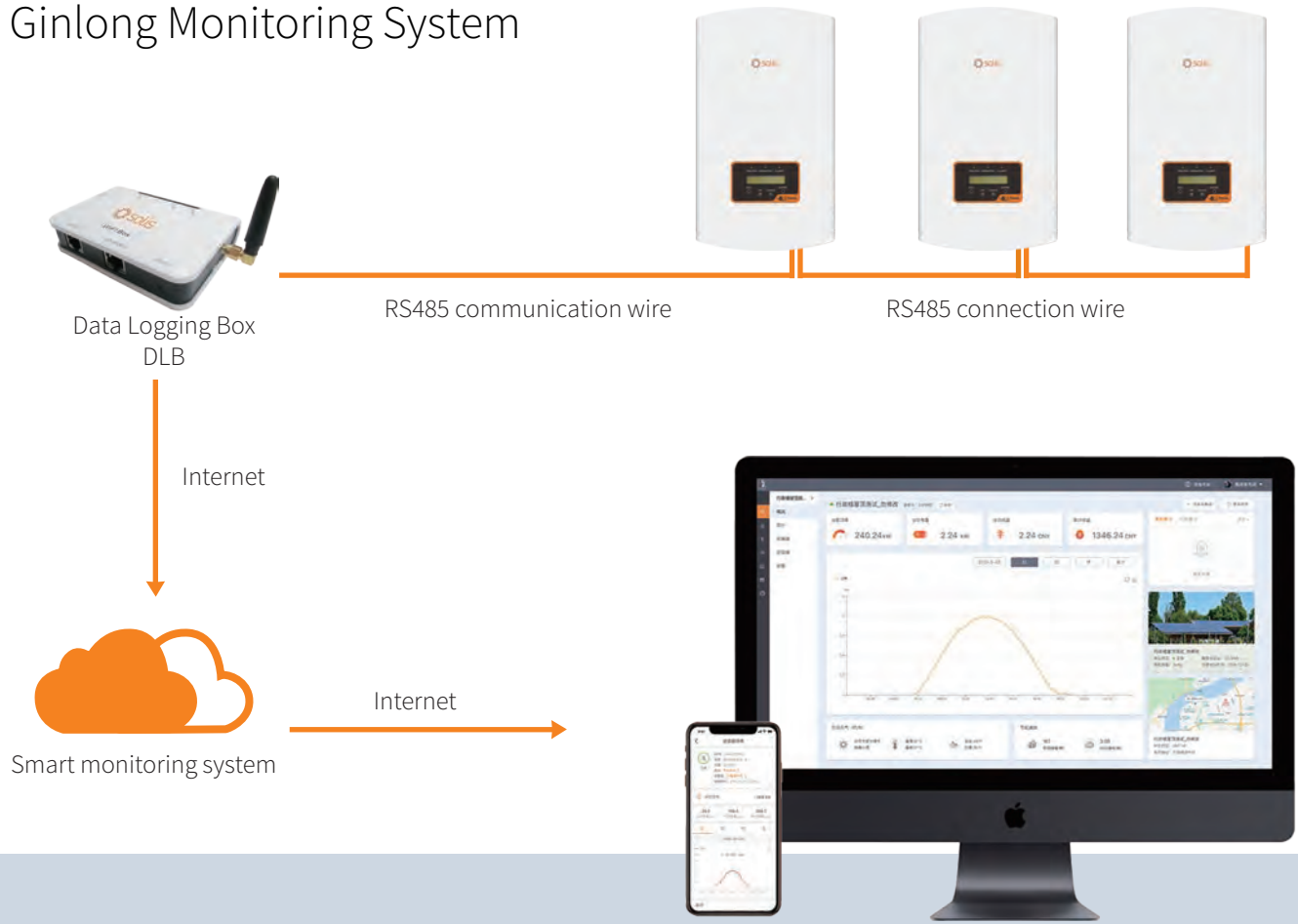
Other

Certificates	FCC, CE		
--------------	---------	--	--

Accessories

Solis Data Logging Box

Ginlong Monitoring System



Data Logging Box DLB

Data Logging Box: Wi-Fi

- Quick installation and easy operation
- Monitor your system and data anytime via Wi-Fi
- Easy visualization of data and other information via Internet
- Comprehensive analysis in the event of a fault

Data Logging Box: GPRS

- Quick installation and easy operation
- GPRS communication supporting remote monitoring
- Multi-functional protections keeping your system from faults
- Keeping users informed of status and data via mobile device

Datasheet

Model Name	DLB-W(Wi-Fi)	DLB-G(GPRS)
Max. number of inverters	10	
Inverter communication	RS485	
Remote communication	Wi-Fi (802.11 b/g/n)	GPRS
Max. communication range	<1 km	
Communication rate	9600bps (adjustable:1200-57600 bps)	
Wi-Fi frequency	2.4 GHz	850/900/1800/1900 MHz
Wi-Fi communication range	300m in outdoor open area without obstruction	/
Wi-Fi transmitting power	802.11b/g/n: +20dBm/+18dBm/15dBm (Max)	Class 4 (2 W) / Class 1 (1 W)
Data collection intervals	5 minutes (adjustable:1-20 minutes)	
Preferences setting	Web server/Serial AT instruction	Serial AT instruction
Firmware updates	Serial/Wireless	
Data access	Serial/Wi-Fi point-to-point/Remote server	Serial/Remote server
Status display	4 LEDs	

Electrical

Input voltage	DC 5V	
Static power consumption	<1.6 W	<2 W
Max. instantaneous power consumption	<2.5 W	<8 W

Environmental

Operating temperature	-10 ~ +65°C	
Operating humidity	10%-90% Relative humidity, no condensa	
Storage temperature	-40 ~ +65°C	
Storage humidity	<40%	
Protection class	IP21	

General Data

Dimensions (L*W*H)	110*86*26 mm	
Weight	108 g	102 g

Other

Certificates	FCC, CE, RoHS	
--------------	---------------	--



Case study





Mexico-Tamaulipas Carport, Mexico 5MW



ABP Ipswich, UK 1MW



Lincolnshire, UK 140kW



JTC Solar Farm, Singapore 5MW



Lumax Industries Ltd, India 750kW



Georgia-Boviet Woodland, U.S.A 1.6MW



Urussanga city Santa Catarina, Brazil 200kW



Dallas, USA 64kW



Punjab, India 150kW



Russia 4.2kW



Igrejinha, Brazil 6kW



Grundfos Rooftop, UK 123.4kW



Adel Vokes Road, Australia 65.85kW



Monash, Australia 1MW



Teheran, Iran 50kW



Västra Götaland, Sweden 43.31kW



RSWM, India 3.6MW



Valinhos, Brazil 5kW



Brazil 2kW



Jamaica 20kW



Costa Rica 47kW



USA 16kW



Kansas, U.S.A 25kW



California, U.S.A 15kW



UK 4.4kW

Installed On the Eiffel Tower



Shanghai Volkswagen Photovoltaic solar carport, China 55MW



Case study



Zhejiang Changer, China 13MW



Zhejiang HZW 470kW



Zhejiang HONGXING 380kW



Zhejiang PINGHU Bus Station 472kW



Zhejiang CJYIN 1.02MW



Shenzhen Jiangnan Times Building 600kW



Shandong Rong Xiang 4.2MW



Shandong Guangxin Food 6.06MW



Tyco Electric, Panan Jinhua Zhejiang 1.5MW



Zhejiang-GAOTERUI 260kW



Zhejiang- Wanli Food 800kW



Ninghai AB hall, modern home plaza 1.53MW



Shandong YUELONG 3.5MW



Zhejiang Anboke 2MW



Changzhou Vaillant 2MW



Zhejiang SORJ 3.9MW



Hainan JiuLongGlass 1.7MW



Hebei Zhangjiakou poverty alleviation PV Plant 5.1MW



Liaoning Yingkou Jiuzhai PV plant 20MW



Shanxi Lvliang ZhongYang poverty alleviation PV Plant 10.3MW



Hebei Qinghuangdao poverty alleviation PV Plant 9.7MW



Shandong Leling poverty alleviation PV Plant 50kW



Shanxi Xiyang poverty alleviation PV Plant 7.2MW



Qinghai HuzhuBanyan poverty alleviation PV Plant 2MW



Hebei Qinghuangdao poverty alleviation PV Plant 5MW



Jilin Heishui Fengman poverty alleviation PV Plant 5MW



Beijing Shunzhen Green Harbor's Plant 5.5MW



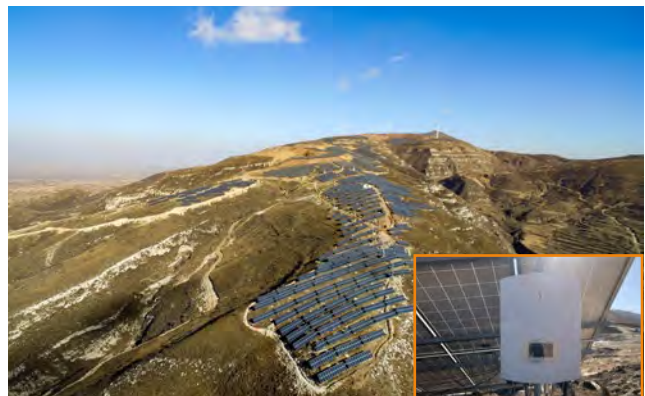
Jiangxi Ganzhou Hengjiang poverty alleviation PV Plant 8.45MW



Shandong Weifang Linqupoverty alleviation PV Plant 20MW



Hebei Baoding Fuping poverty alleviation PV Plant 6.6MW



Shanxi Xinzhou NingWu poverty alleviation PV Plant 18.11MW



Shanxi Xinzhou FanShi poverty alleviation PV Plant 8MW



Shanxi Yizhou Jingle poverty alleviation PV Plant 36.3MW







Hebei Zhangbei Agricultural-photovoltaic hybrid PV plant 50MW



Shanxi Guangling PV plant 1.47MW



Huaneng Yimin surface mine PV plant 20MW



Jiangxi Ganzhou PV Plant 3.5MW



Inner Mongolia Khobqi Desert 20MW



Zhejiang Hangbu Agricultural-photovoltaic hybrid PV plant 30MW



Hubei Guanyin Agricultural-photovoltaic hybrid PV plant 20MW



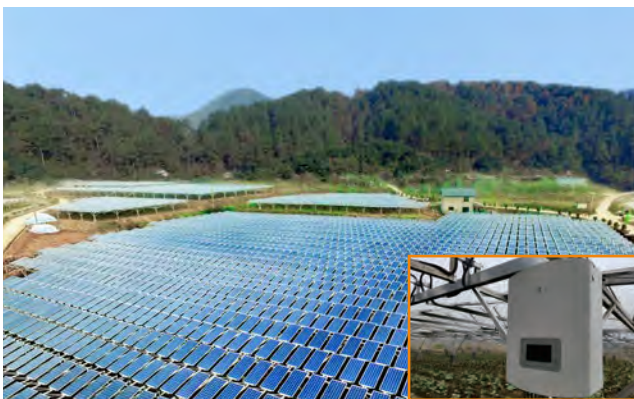
Quzhou Qinghu Agricultural-photovoltaic hybrid PV plant 20MW



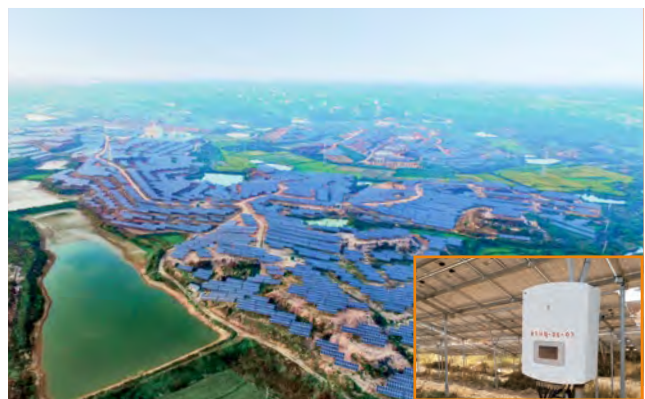
Zhejiang Jinyun Beitai 21MW



Zhejiang Zhuxi 25MW



Zhejiang Dajie Agricultural-photovoltaic hybrid PV plant 3MW



Zhejiang Longyou Agricultural-photovoltaic hybrid PV plant 25MW



Inner Mongolia Khobqi Desert 336kW



Liaoning Gaizhou Jiuzhai PV plant 20MW



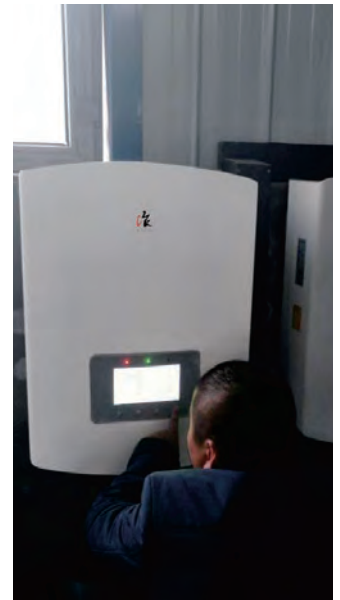
Zhejiang Jiangshan Xintang Reservoir 836kW



Liaoning Jiuzhai Gaizhou PV plant 20MW



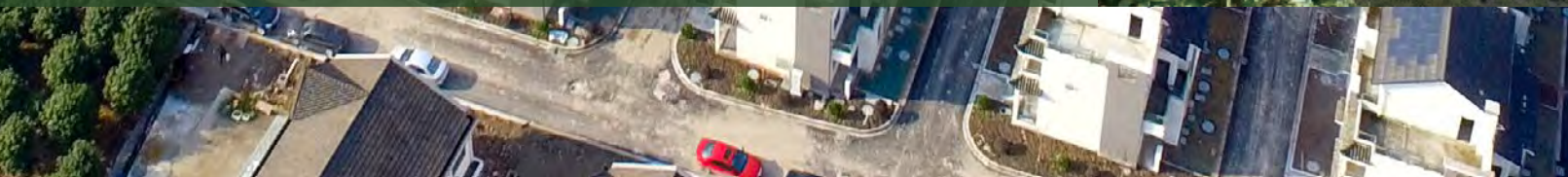
Shanxi Lvliang ZhongYang Jiajingtancheng PV rooftop 450kW



Heilongjiang PV plant



The largest photovoltaic building integration village in Zhejiang Province, China 300kW





Contact Us:

HQ:

📍 No.57 Jintong Road, Binhai Industrial Park, Xiangshan, Ningbo, Zhejiang, 315712, China

☎ +86 574 6580 2188 ✉ sales@ginlong.com

US:

📍 565 Metro Pl. S. Suite 3214, Dublin OH 43017 USA

☎ +1 866 438 8408 ✉ ussales@solisinverters.com

UK:

📍 1 Church Street Bootle Liverpool, L20 1AF, UK

☎ +44 113 328 0870 ✉ uksales@ginlong.com

India:

📍 104, wing -A, 1st floor, Techno1 City Premises Plot no. X-4/1 Mahape Navi Mumbai- 400710, India

☎ +91 224 9744 251 (sales) ✉ Indiasales@ginlong.com
+91 224 9744 021 (service)

EU Service Center:

📍 Calle de Serrano, 240 - 1ª planta 28016 Madrid - Spain

☎ +34 914 430 810 ✉ sales@ginlong.com
eu-service@solisinverters.com

Brazil:

📍 Sala 618, R. Paulo César Fidélis, 39 - Lot. Res. Vila Bella, Campinas - SP, Brasil, 13087-727

☎ +55 19 996133803 ✉ sales@ginlong.com

Netherlands:

📍 Nokweg 3-B, 2451 AL Leimuiden, Nederland

☎ +31 85 048 1300 ✉ benelux@solisinverters.com
beservice@ginlong.com

Australia:

📍 No. 5/109 Tulip Street, Cheltenham, Vic. 3192 Australia

☎ +61 3 8555 9516 ✉ sales@ginlongaust.com.au
service@ginlongaust.com.au

South Africa:

📍 Ground Floor, Building 4 Quadrum Office Park 50 Constantia Boulevard, Constantia Kloof Ext. 23, Johannesburg, South Africa

☎ +27 11 534 8461 ✉ sales@ginlong.com

📘 Solis

🐦 Solis

🌐 Solis

📺 YouTube Ginlong Solis

W:ginlong.com

